

Editors' Picks



Saturday Jane Franklin Dance: 24 Hour Dance Project • Saturday-Nov. 12 FotoWeek DC



LEFT: PAUL GILLIS PHOTOGRAPHY; RIGHT, PETER LIK

AFI EUROPEAN UNION FILM SHOWCASE

Through Nov. 22
AFI's annual showcase of European cinema routinely contains movies you'll be hearing about again come awards season. The cast for this year's slate of 44 films includes Rachel Weisz (Terence Davies's "The Deep Blue Sea"), Michael Fassbender, Viggo Mortensen and Keira Knightley (David Cronenberg's "A Dangerous Method") and Gary Oldman, Colin Firth and John Hurt (Tomas Alfredson's "Tinker, Tailor, Soldier, Spy"). Visit www.afi.com/silver for a complete schedule of films. AFI Silver Theatre, 8633 Colesville Rd., Silver Spring (Metro: Silver Spring). 301-495-6720. \$12 per screening, \$20 closing night.

FALLFRINGE

Through Nov. 20
There was a time when the Capital Fringe Festival came and went in July, and if you missed the fun, you had to wait a full year for its return. No longer. Catch up with some of the much-loved shows from Fringe Festivals past, including Vijai Nathan's one-woman show "Good Girls Don't, but Indian Girls Do." And don't miss comic storyteller-singer-songwriter Ed Hamell as he regales Washington for the first time since Fringe 2010 with "The Evolution Revolution." Visit www.capfringe.org for showtimes. The Shop at Fort Fringe, 607 New York Ave. NW. \$20, \$15 for those with a 2011 Fringe Festival button.

ARLINGTON PUZZLE FESTIVAL

Saturday FREE
What's a 23-letter, three-word phrase meaning a competition designed for crossword and Sudoku lovers? The answer: Arlington Puzzle Festival, of course, an all-day gathering of number-and-word-puzzle aficionados to see who has the quickest pencil in Northern Virginia. Contestants can register for the crossword tournament, with puzzles provided by none other than master puzzle constructor Will Shortz, or the Sudoku tournament, with grids designed by U.S. and World Sudoku Championship winner Thomas Snyder. From 8:30 a.m. to 5 p.m. Arlington Central Library, 1015 N. Quincy St., Arlington. 703-228-5990. centrallibraryarlingtonva.blogspot.com.

FOTOWEEK DC

Saturday-Nov. 12
The citywide celebration of all things photographic is back. Fourteen contemporary photo exhibitions will be on view at FotoWeek Central, including "Beyond Witness: New Approaches to Crisis Photography" and "The Nights of 9/11: Photography by Hale Gurland." There's also the all-night photographic competition, Nightvisions, Saturday from 8 p.m. to Sunday at 4 a.m. Events begin with a FotoWeek launch party Friday from 5 p.m. to 11:30 p.m. FotoWeek Central, 1800 L St. NW. 202-337-3686. www.fotoweekdc.org. Free for FotoWeek Central exhibitions, \$10 Nightvisions, \$55 launch party.

JANE FRANKLIN DANCE: 24 HOUR DANCE PROJECT

Saturday
When you're looking for fresh choreography, it's hard to get more of-the-moment than the Jane Franklin Dance company's 24 Hour Dance Project. The premise: Dancers, choreographers and musicians have one day to create, rehearse and perform a work that blends movement with digital art and live music. See how they fare in performances at 5 and 8 p.m. Woolly Mammoth Theatre, 641 D St. NW (Metro: Archives). 703-933-1111. www.janefranklindance.com. \$21 in advance, \$25 at the door.

AUTUMN BREWS: A SEASONAL TASTING WITH THE BEER ACTIVIST

Tuesday
After Halloween, it's difficult to even look at a bottle of pumpkin ale, let alone consider ordering one at a bar. Luckily, not all of autumn's notable beers are pumpkin ales. A range of saisons, stouts and porters are out there, too, and Chris O'Brien, beer aficionado and author of "Fermenting Revolution: How to Drink Beer and Save the World," will lead a tasting of some of the best seasonal offerings from local breweries at 7 p.m. Sixth & I Historic Synagogue, 600 I St. NW (Metro: Gallery Place). 202-408-3100. www.sixthandi.org. \$15 in advance, \$18 at the door.

FOUND VS. FOUND

Tuesday
Thanks to Web sites such as the

Daily What, society now has an infinite supply of "found" curiosities at the click of a button: notes, instructional videos, commercials, failures and unfortunate music videos. The editors of Found Magazine, Davy and Peter Rothbart, and the curators of the Found Footage festival, Joe and Nick, saw the value of such bric-a-brac a mile away. Now, these dueling scions of the "found" genre team up to see whether such randomly collected curios are more amusing in print or video. At 7:20 p.m. Arlington Cinema 'N' Drafthouse, 2903 Columbia Pike, Arlington. 703-486-2345. www.arlingtondrafthouse.com. \$13.

MUSEUM SHOP ARD

Thursday-Nov. 13
Knock out a bunch of your holiday shopping early this year, without ever stepping foot in a mall. Strathmore's annual gathering of museum shops from across the area has something for everyone on your list: theater buffs (Shakespeare Theatre Company), legal types (Supreme Court Historical Society), kids (the Shop at Imagination Stage), art lovers (the Phillips Collection) and world travelers (National Geographic store). In all, some 18 museums will be on hand Thursday and Nov. 11 from 10 a.m. to 8 p.m., Nov. 12 from 10 a.m. to 6 p.m. and Nov. 13 from 10 a.m. to 5 p.m. Mansion at Strathmore, 10701 Rockville Pike, North Bethesda (Metro: Grosvenor). 301-581-5100. www.strathmore.org. \$9.

— Alex Baldinger

SHOULD YOU GO?

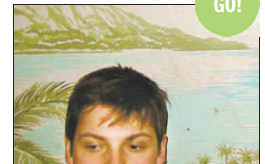
Our quick guide to Post critics' takes on plays, movies and music.

MOVIES



Like Crazy is the millennial generation's "Love Story." And that's a good thing.
— Ann Hornaday
Review, Page 27

MUSIC



More Humans' "Demon Station" is a short singalong EP that "simply sounds great." At St. Stephens Church on Friday.
— David Mallitz
Review, Page 6

THEATER



An appealing cast can't save Constellation Theatre's lackluster revival of **Arms and the Man**.
— Peter Marks
Mini review, Page 39

ESCAPES



The snow geese aren't the only ones stopping at Delaware's **Bombay Hook National Wildlife Refuge**.
— James F. Lee
Story, Page 17

PHOTOS: FROM TOP: FRED HAYES/PARAMOUNT PICTURES AND INDIAN PAINTBRUSH PRODUCTIONS; MATT DOWE/FROM MORE HUMANS; SCOTT SUCHMANN/CONSTELLATION THEATRE; JAMES F. LEE FOR THE WASHINGTON POST